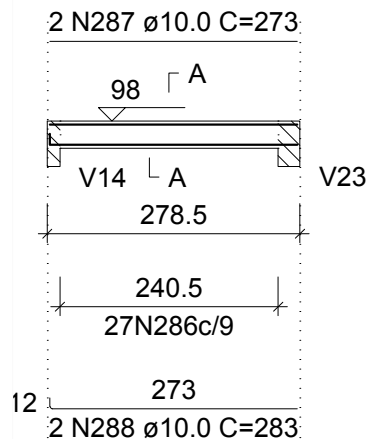


V32 (14 x 30)

ESC 1:100

SEÇÃO A-A

ESC 1:50



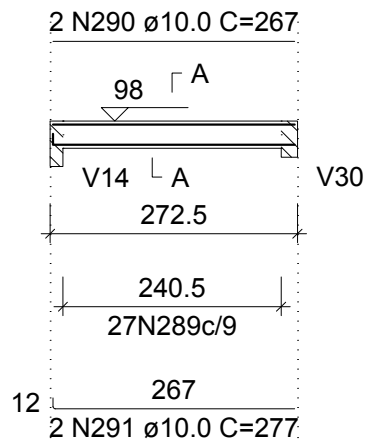
27 N286 ø5.0 C=75

V33 (14 x 30)

ESC 1:100

SEÇÃO A-A

ESC 1:50



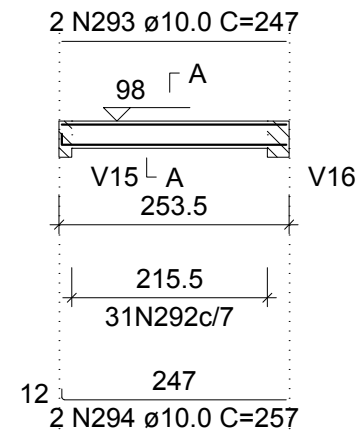
27 N289 ø5.0 C=75

V34 (14 x 30)

ESC 1:100

SEÇÃO A-A

ESC 1:50



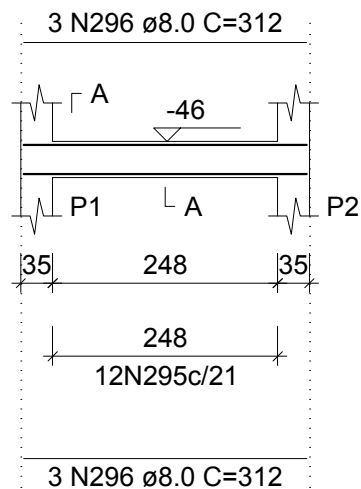
31 N292 ø5.0 C=75

V35 (18 x 40)

ESC 1:100

SEÇÃO A-A

ESC 1:50



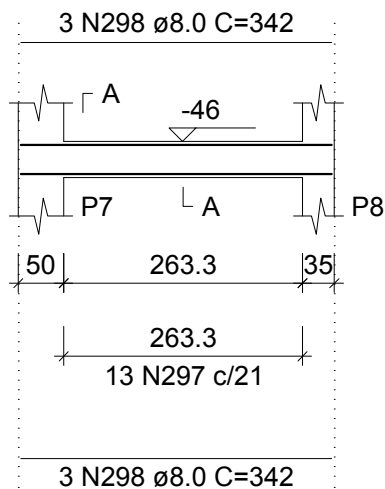
12 N295 ø5.0 C=103

V36 (18 x 40)

ESC 1:100

SEÇÃO A-A

ESC 1:50



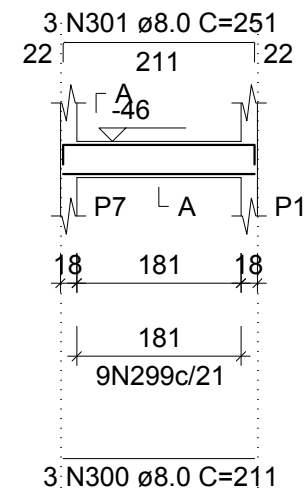
13 N297 ø5.0 C=103

V37 (18 x 40)

ESC 1:100

SEÇÃO A-A

ESC 1:50



9 N299 ø5.0 C=103